




Contents

Meet the Author	6
Before Reading	7
An old biscuit tin	13
Jan's message	20
A school day	29
Trespassing	34
At Tom's house	41
What year is it?	47
Technology is fun	53
Music	59
Going back	66
Searching for Tom	71
A surprise discovery	77
After Reading	83



Before Reading

1 Match the containers with the names.



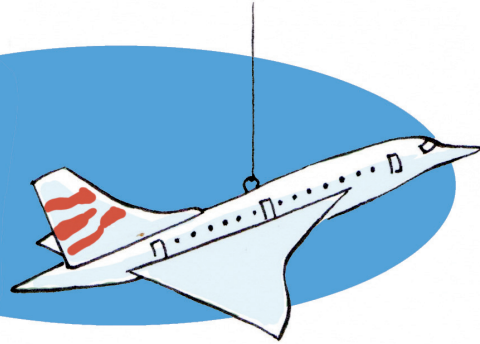
- a biscuit tin
- b bottle
- c cup
- d drawer
- e glass
- f lunch box
- g hot water bottle
- h plastic bag

2 Think of something to put inside each container.

3 A *time capsule* is a container. You put things inside it and then leave it in a special place for people to find in the future. Which of the containers on this page is best for a time capsule?

Before Reading

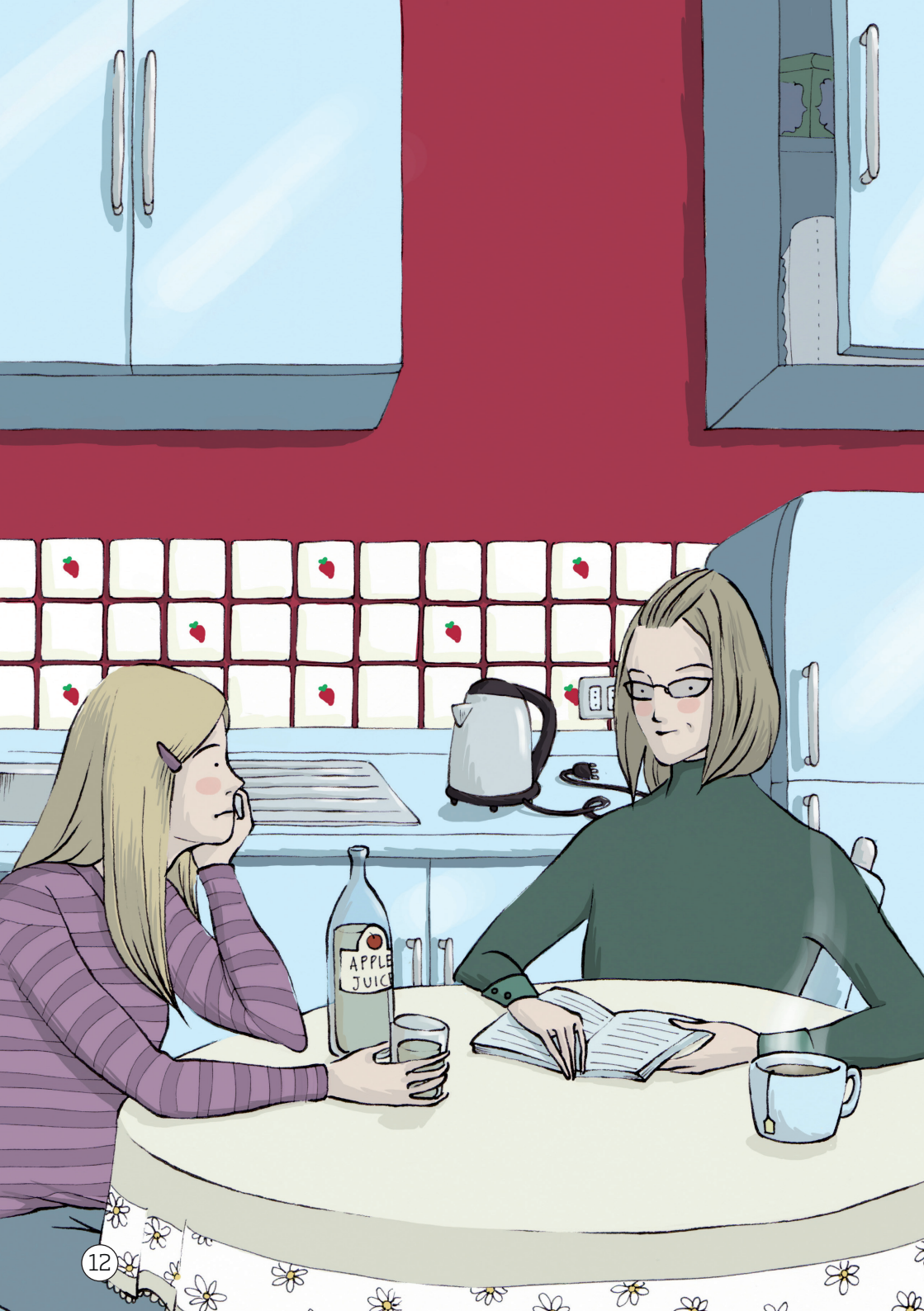
1 People put things inside time capsules to give information about the present time. Read this list of things. Do you associate them with the past, the present or the future?




- 3D printers
- black and white television
- Concorde
- flying taxis
- holidays in space
- generative AI
- water bottles
- robots
- vinyl LP records
- mobile phones

PAST	PRESENT	FUTURE

2 Add one more thing to each category from Exercise 1.



AN OLD BISCUIT TIN

 When Jan walks into the kitchen, her mum is sitting at the table, reading a book and drinking a cup of tea. Jan goes to the fridge and looks inside for a drink. It's a choice between a cola and an apple juice. The apple juice wins.

'Don't eat anything,' Mum says. 'Dinner's in 20 minutes.'

Jan doesn't answer. She takes a glass from the cupboard above the sink, sits down opposite Mum, and pours the apple juice into the glass.

'Mum?'

'Uh-huh?'

Mum doesn't look up from her book. It's always the same. When she starts reading a book, she can't stop until she reaches the end. It makes Dad mad.

'Can you give me something for my time capsule?'

Mum looks up from her book. Suddenly, she's interested.

'Your *what*?'

'My time capsule. It's for a school project.'

'What's a time capsule?'

Jan can't believe her mum doesn't know what a time capsule is. Everyone knows what a time capsule is.

'A time capsule... you know.'

'No, I don't know.'

GLOSSARY

- **choice:** possibility to decide
- **fridge:** place to keep food cold
- **pours:** puts liquid into a glass
- **reaches:** comes to; arrives at

‘You put things inside it, and then you bury it in the garden for someone to find in the future. That’s why it’s called a time capsule.’

Mum puts down her book. She drinks some more tea and looks across at Jan.

‘What do you put inside?’

‘Things. Personal things... a letter... things related to now... this year... a diary or a newspaper, for example.’ Jan looks at the apple juice. ‘Or a bottle of apple juice. When the person finds the time capsule in the future, they can discover things about the past. They can read the newspaper. They can find out what people ate and drank, and they can find out about... me.’

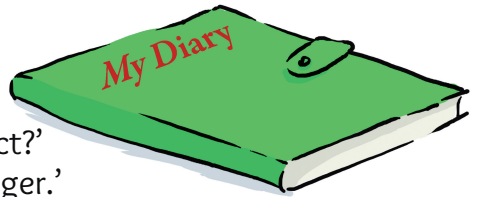
‘How do you know someone is going to find it?’

‘I don’t.’

‘I see. And this is a school project?’

‘Yes. It’s for history. For Mrs Zinger.’

‘And you want me to give you something to put inside the time capsule?’ Jan makes a face. It’s a face Mum recognises. It’s the face Jan makes to say Mum doesn’t understand. Mum *never* understands.



GLOSSARY

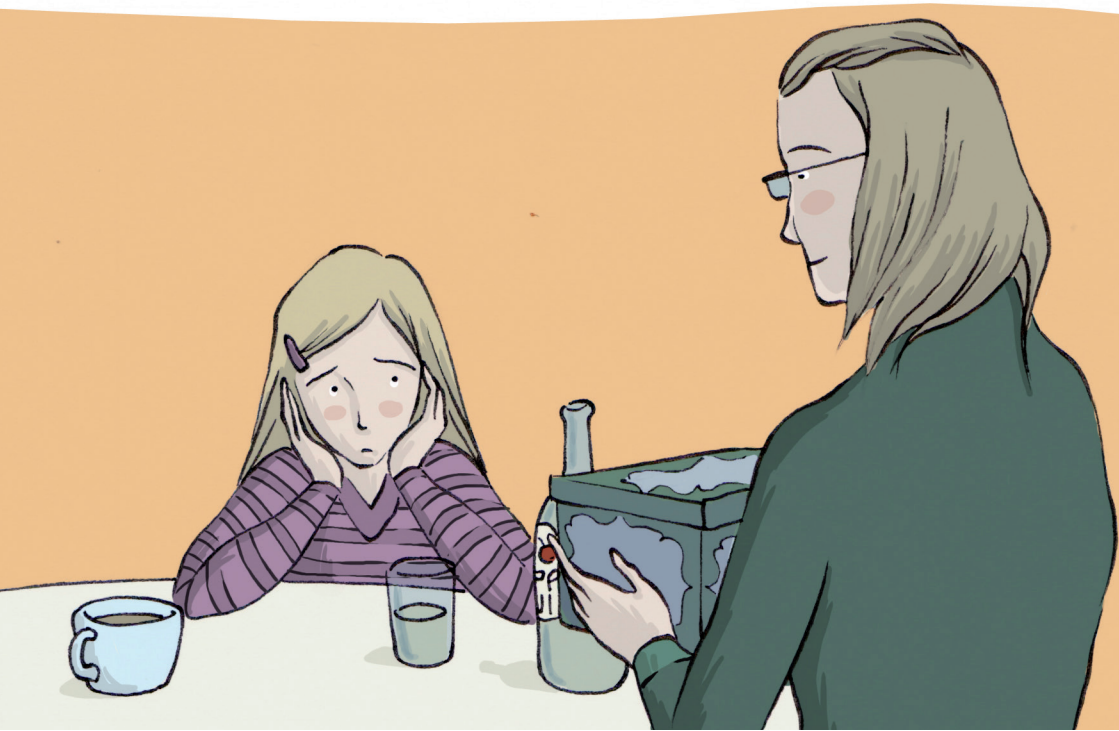
- **across:** on the opposite side of the table
- **bury:** put under the ground
- **find out:** discover
- **related to:** connected to; that describe

‘No, Mum. You don’t understand. I want something to put the things into. I need a container’. Have you got anything? Please?’

‘What kind of thing?’

‘I don’t know. A box? I need something strong to protect the things inside.’

Mum looks around the room and thinks. Suddenly, she has an idea. She goes to one of the cupboards and takes out a large old biscuit tin. ‘Here it is,’ she says, opening the tin and looking inside.



• **biscuit tin:** metal box for biscuits

• **container:** something to keep things inside



Jan remembers the old biscuit tin with its bright• pictures of traditional winter scenes from a perfect past.

She remembers looking at the pictures of the children playing in the snow, the family sitting around a living-room fire, the boy and girl building a snowman•, the shop windows in the village street, the man carrying a Christmas tree home.

She remembers thinking about the lives of the people in the pictures. Where did they live? What were their names? And she remembers the name written in big red letters across the top of the tin. “McIntyre’s: Britain’s Best Biscuit Company.”

MEMORY

What things do you remember from when you were a child?

GLOSSARY

- **bright:** with lots of colours; shining
- **snowman:** human figure made of snow

Now Jan's mum is making a face. She's looking inside the tin, and she doesn't like what she sees. She opens the organic recycling bin[•] and throws away some old forgotten biscuits. Then she cleans the tin and gives it to Jan.

'You always liked this old biscuit tin. Is it OK for your time capsule?'

'Thanks, Mum. It's perfect.'

Mum remembers something. She goes through to the living room and comes back with a newspaper.

'It's today's newspaper. Don't tell your dad.'

Jan takes the biscuit tin and newspaper up to her room and puts them on her bed. What other things can she put in the time capsule?

HELP JAN

What does Jan put in her time capsule?
Think of three things.

- 1
- 2
- 3

• **organic recycling bin:** rubbish container for unused food



She looks around the room. There's her collection of *Twilight* books and DVDs. No. She wants to keep them.

How about a memory stick? She can put all her photos on the memory stick. What a great idea! The people in the future can see all her pictures. So, Jan logs on to her computer and copies her photo collection onto the memory stick.

What other things? There's her *Pirates of the Caribbean* collection, including Jack Sparrow, Will Turner and Elizabeth Swann action figures. Yes. Why not? She's not into *Pirates* since she discovered Bella and *Twilight*. Vampires are more fun than pirates.

GLOSSARY

- **memory stick:** small device to store digital data



There's the postcard from Aunt Suzie. She sent it to Jan's mother from Berlin in 1989. Jan's aunt was a reporter[•] for a newspaper in London. OK.

And the packet[•] of sweets she bought yesterday.

And the map of the town she printed from the internet. People in the future are going to be interested in a map of the town from the past.

And the Kiwi keyring[•] Dad is always telling her to use.

The Mika CD from her birthday... the Earth Hour wristband... and a copy of *TM: Teen Magazine*. Perfect. She puts them all into the box and then sits down in front of her computer.

'Now the difficult part,' she says to herself. 'A letter to the person in the future. What can I say?'

-
- **keyring:** ring to hold keys
 - **packet:** small bag

- **reporter:** person who writes for a newspaper

After Reading

Vocabulary

1 Use five of the words in the box to complete the sentences.

hood anorak sheet cable crew rhyme cliff dial

- a is another word for electrical wire.
- b The is the part of a jacket that covers your head.
- c If you want to call someone on the phone, you must their number.
- d If you are as white as a, you are probably not very well.
- e A is a steep rock side, usually at the edge of the sea.

2 Write sentences with the words left out in Exercise 1.

3 *Into or out of?* Complete the following sentences.

- a There's smoke coming a chimney.
- b 'I want something to put the things
- c The boy looks back and then disappears the trees at the end of the garden.
- d Jan runs the house, takes her bicycle from the garage, and cycles down the road.
- e Jan is looking her window down at the tree and the place where she left the time capsule.
- f Jan gets bed and looks for Tom's computer.
- g Tom's dad comes the room and sits down on an armchair.
- h Tom looks Jamie's eyes.

After Reading

Cambridge English Exams

K A2 Key English Test Reading and Writing Part 4

1 Read the sentences and choose the correct answer (A, B or C).

- 1 'It be difficult to live without mobile phones and the internet.'
A not **B** will **C** must
- 2 can Jan's parents find her if she's in the past?
A When **B** How **C** Why
- 3 Jan doesn't have brothers or sisters.
A no **B** not **C** any
- 4 'Jamie said you his biscuit tin and he needed it back.'
A borrowed **B** gave **C** lent
- 5 When Jan's mum starts reading a book, she can't stop she reaches the end.
A until **B** after **C** when
- 6 'You bury the time capsule for to find in the future.'
A everyone **B** no one **C** someone
- 7 Now Jan's mum is a face.
A making **B** having **C** doing
- 8 'The house is Pauly's, and that's half a mile down the road.'
A close **B** nearest **C** longest
- 9 'I what's going to be here in the future.'
A think **B** remember **C** wonder