

Singet dem Herrn ein neues Lied

SATB (SSAB/SAAB) a cappella oder mit Instrumentalbegleitung
 Auftragswerk der Kantorei Swakopmund/Namibia zum 70-jährigen Jubiläum (August 2024)

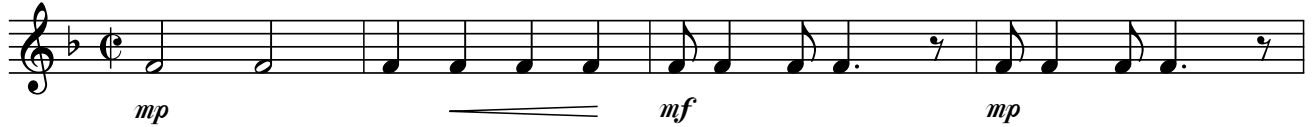
Text: Michael Aschauer, nach Psalm 98

Musik: Michael Aschauer,
 © Helbling

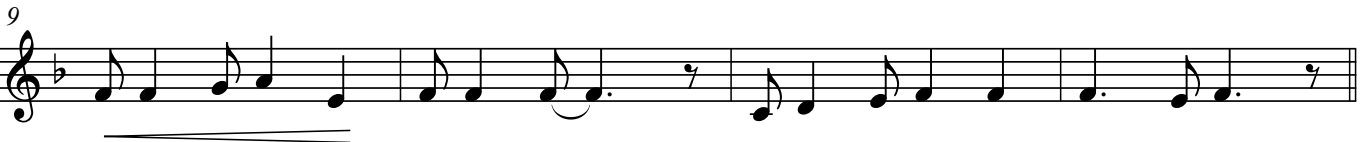
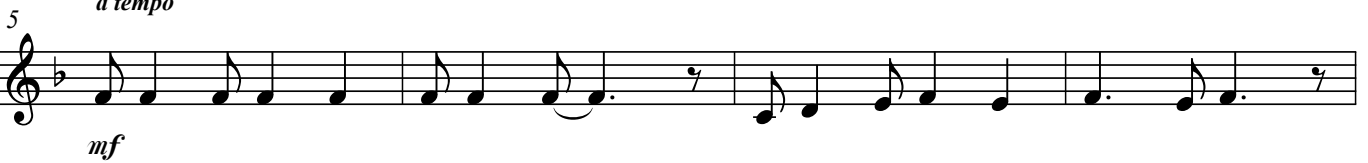
Freudig-mitreibend ♩ = ca. 64

A Intro

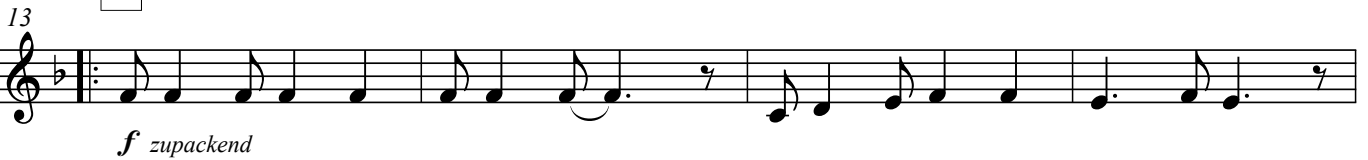
poco rit.



a tempo



B Refrain



C Strophen



32 *)
a cappella

f *mf*

Detailed description: Musical staff 32-36. Treble clef, key signature of one flat. Measure 32 starts with a forte (*f*) dynamic. Measure 34 has a mezzo-forte (*mf*) dynamic. The staff ends with a repeat sign and a fermata.

37 *)
bei einer Ausführung mit Instrumentalbegleitung

mp

Detailed description: Musical staff 37-41. Treble clef, key signature of one flat. Measure 37 starts with a mezzo-piano (*mp*) dynamic. The staff ends with a repeat sign and a fermata.

D Bridge

42

mf

Detailed description: Musical staff 42-45. Treble clef, key signature of one flat. Measure 42 starts with a mezzo-forte (*mf*) dynamic. The staff ends with a fermata.

46

f

Detailed description: Musical staff 46-49. Treble clef, key signature of one flat. Measure 46 starts with a forte (*f*) dynamic. The staff ends with a fermata.

50

Detailed description: Musical staff 50-53. Treble clef, key signature of one flat. The staff ends with a fermata.

E Refrain

54

1. x *mf*, 2. x *ff* strahlend

Detailed description: Musical staff 54-57. Treble clef, key signature of one flat. Measure 54 starts with a first ending bracket. The staff ends with a fermata.

58

Detailed description: Musical staff 58-61. Treble clef, key signature of one flat. The staff ends with a fermata.

F Ending *poco rit.* *a tempo*

62

mf *mp* *f*

Detailed description: Musical staff 62-65. Treble clef, key signature of one flat. Measure 62 starts with a mezzo-forte (*mf*) dynamic. Measure 63 has a mezzo-piano (*mp*) dynamic. Measure 64 has a forte (*f*) dynamic. The staff ends with a fermata.

*) Die Variante bezieht sich nur auf die Besetzung. Bei Strophe 1 und bei Strophe 2 erklingt daher jeweils dieselbe Klammer, je nach Ausführung a cappella oder mit Instrumentalbegleitung.