

# Singet dem Herrn ein neues Lied

SATB (SSAB/SAAB) a cappella oder mit Instrumentalbegleitung  
 Auftragswerk der Kantorei Swakopmund/Namibia zum 70-jährigen Jubiläum (August 2024)

Text: Michael Aschauer, nach Psalm 98

Musik: Michael Aschauer,  
 © Helbling

**Freudig-mitreibend**  $\text{♩} = \text{ca. } 64$

**A** Intro

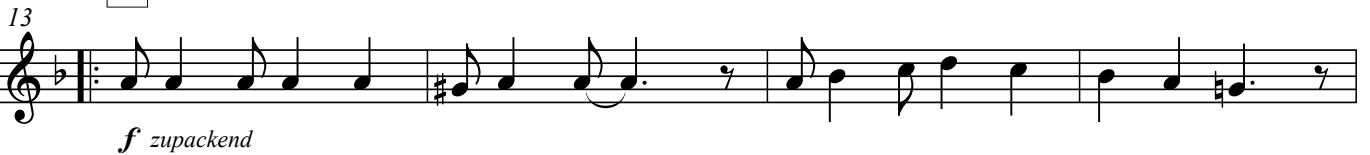
*poco rit.*



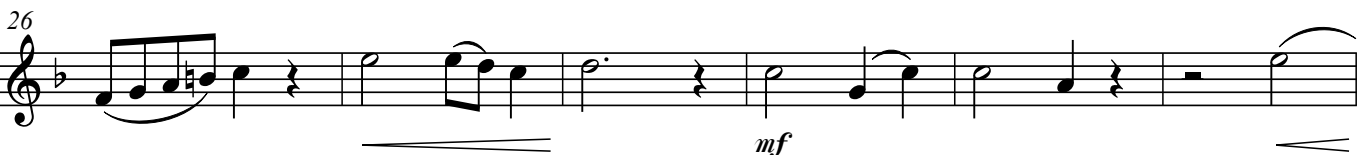
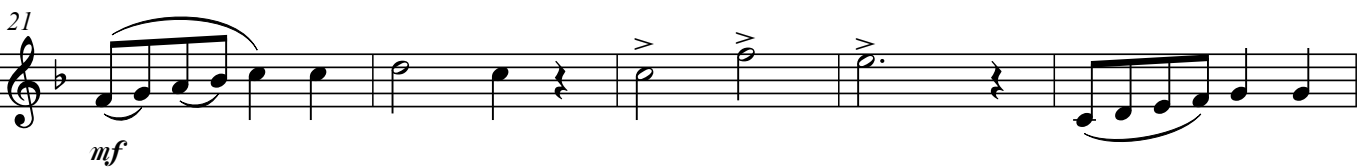
*a tempo*



**B** Refrain



**C** Strophen



32 \*) a cappella

*f* *mf*

Detailed description: Musical staff 32-36. Starts with a treble clef and a key signature of one flat. Measure 32 begins with a forte (*f*) dynamic. The melody consists of quarter and eighth notes. Measure 35 has a mezzo-forte (*mf*) dynamic. The staff ends with a repeat sign and a fermata.

37 \*) bei einer Ausführung mit Instrumentalbegleitung

*mp*

Detailed description: Musical staff 37-41. Starts with a treble clef and a key signature of one flat. Measure 37 begins with a mezzo-piano (*mp*) dynamic. The melody consists of quarter and eighth notes. Measure 40 has a sharp sign (#) above the note. The staff ends with a repeat sign and a fermata.

**D** Bridge

42

*mf*

Detailed description: Musical staff 42-45. Starts with a treble clef and a key signature of one flat. Measure 42 begins with a mezzo-forte (*mf*) dynamic. The melody consists of quarter and eighth notes. The staff ends with a repeat sign and a fermata.

46

*f*

Detailed description: Musical staff 46-49. Starts with a treble clef and a key signature of one flat. Measure 46 begins with a forte (*f*) dynamic. The melody consists of quarter and eighth notes. Measure 48 has a sharp sign (#) above the note. The staff ends with a repeat sign and a fermata.

50

Detailed description: Musical staff 50-53. Starts with a treble clef and a key signature of one flat. Measure 50 begins with a forte (*f*) dynamic. The melody consists of quarter and eighth notes. Measure 52 has a sharp sign (#) above the note. The staff ends with a repeat sign and a fermata.

**E** Refrain

54

1. x *mf*, 2. x *ff* strahlend

Detailed description: Musical staff 54-57. Starts with a treble clef and a key signature of one flat. Measure 54 begins with a mezzo-forte (*mf*) dynamic. The melody consists of quarter and eighth notes. Measure 56 has a sharp sign (#) above the note. The staff ends with a repeat sign and a fermata.

58

Detailed description: Musical staff 58-61. Starts with a treble clef and a key signature of one flat. Measure 58 begins with a forte (*f*) dynamic. The melody consists of quarter and eighth notes. Measure 60 has a sharp sign (#) above the note. The staff ends with a repeat sign and a fermata.

**F** Ending

62

*poco rit.* *a tempo*

*mf* *mp* *f*

Detailed description: Musical staff 62-65. Starts with a treble clef and a key signature of one flat. Measure 62 begins with a mezzo-forte (*mf*) dynamic. The melody consists of quarter and eighth notes. Measure 63 has a *poco rit.* marking. Measure 64 has an *a tempo* marking. Measure 65 has a forte (*f*) dynamic. The staff ends with a repeat sign and a fermata.

\*) Die Variante bezieht sich nur auf die Besetzung. Bei Strophe 1 und bei Strophe 2 erklingt daher jeweils dieselbe Klammer, je nach Ausführung a cappella oder mit Instrumentalbegleitung.